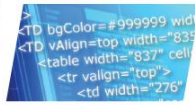




Access



Video



Software



Technology



## Pinnacle Data Exchange

Automatically update the Pinnacle database from a third party system

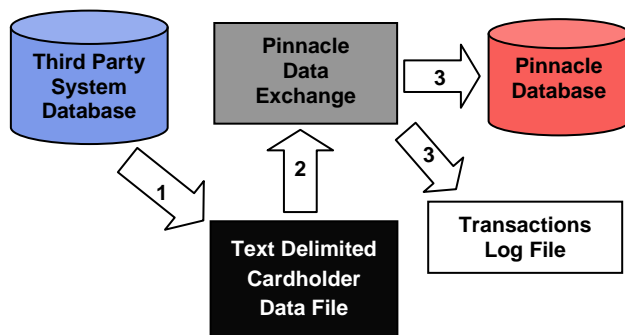
### Pinnacle Data Exchange

Pinnacle Data Exchange is an application that allows third party systems to update the Pinnacle cardholder database.

Basically, a third party system that can output a text file in the specified format and, in the specified location, will make changes to the Pinnacle cardholder database. A transaction log file will be created.

Such changes can be automatic, via Pinnacle Scheduler or Windows Scheduler. You can also run Pinnacle Data Exchange manually and perform the changes on the GUI.

Changes can be made to fields such as Name (Last , First and MI), Access Levels, Card Type, Expiration and Activation Dates, Card Code, PIN, Hot Stamp and Custom Fields.



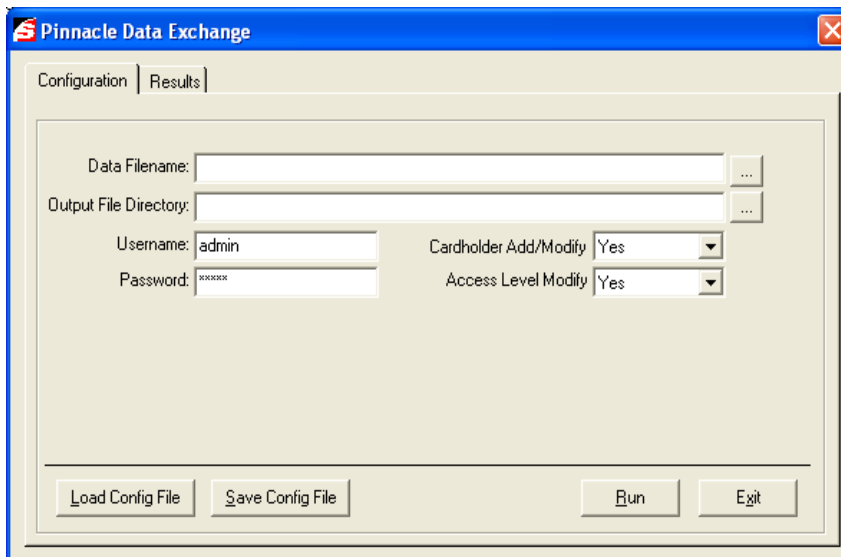
### Pinnacle Data Exchange Functions:

<b>Add</b>	Creates a new cardholder or modifies the cardholder if it already exists. Assigns an Access Level and issues a Card if such data is provided.
<b>Delete</b>	Deletes the specified cardholder. No action if the cardholder does not exist.
<b>Modify</b>	Updates the specified cardholder. Creates a new cardholder if it doesn't already exist. Sets all fields to the specified values but does not assign/revoke Access Levels nor issue/return cards.
<b>Assign</b>	Assigns a new Access Level to the specified cardholder; no action if the cardholder does not exist. No other cardholder modifications are made.
<b>Revoke</b>	Revokes an Access Level from the specified cardholder; no action if the cardholder does not exist. No other cardholder modifications are made.
<b>Issue</b>	Issues a Card to the specified cardholder; no action if the cardholder does not exist. No other cardholder modifications are made.
<b>Return</b>	Returns a Card for the specified cardholder; no action if the cardholder does not exist. No other cardholder modifications are made.
<b>Lost</b>	Lost Card for the specified cardholder; no action if the cardholder does not exist. No other cardholder modifications are made.

# Pinnacle Data Exchange

## Requirements:

- Pinnacle version 6.1.85 or later
- Purchase the Pinnacle Data Exchange license



*Pinnacle Data Exchange  
Configuration and Results Tabs*

